



*Road Running Technical Council  
USA Track & Field*  
**Measurement Certificate**



Name of the course Brew City Half Marathon 2026 Distance 21.0975 km  
Location (state) WI (city) Milwaukee  
Type of course: Road Race  
Measuring Methods: Bicycle  
Measured By Peter Starykowicz - 1152 Ensell Rd - Lake Zurich, IL 60047 - (224) 757-5425 - colin@allcommunityevents.com  
Race Contact Colin Pekovitch - 1152 Ensell Road - 8473732937 - colin@allcommunityevents.com  
Date(s) when course measured: 04/09/2026  
Number of measurements of entire course: 2 Course Configuration: several out/back sections  
Elevation (meters above sea level) Start 179.53 Finish 178.92 Lowest 174.96 Highest 199.64  
Straight line distance between start and finish 292.47 m Drop: 0.03 m/km Separation 1.39 %  
Type of surface: Paved 100 % Dirt 0 % Gravel 0 % Grass 0 % Track 0 %  
Effective date of certification: April 13, 2026 Certification code: WI26003DM

Note to Race Director: Use this Certification Code  
in all public announcements relating to your race.

## *Be It Officially Noted That*

Based on examination of data provided by the above named measurer, the course described above and in the map attached is hereby certified as reasonably accurate in measurement according to the standards adopted by the Road Running Technical Council. If any changes are made to the course, this certification becomes void, and the course must then be recertified.

**Verification of Course** --- In the event a National Open Record is set on the course, or at the discretion of USA Track & Field, a verification measurement may be required to be performed by a member of the Road Running Technical Council. If such a remeasurement shows the course to be short, then all pending records will be rejected and the course certification will be cancelled.

***This certification expires on December 31 of the year:*** **2036**

**AS NATIONALLY CERTIFIED BY:**

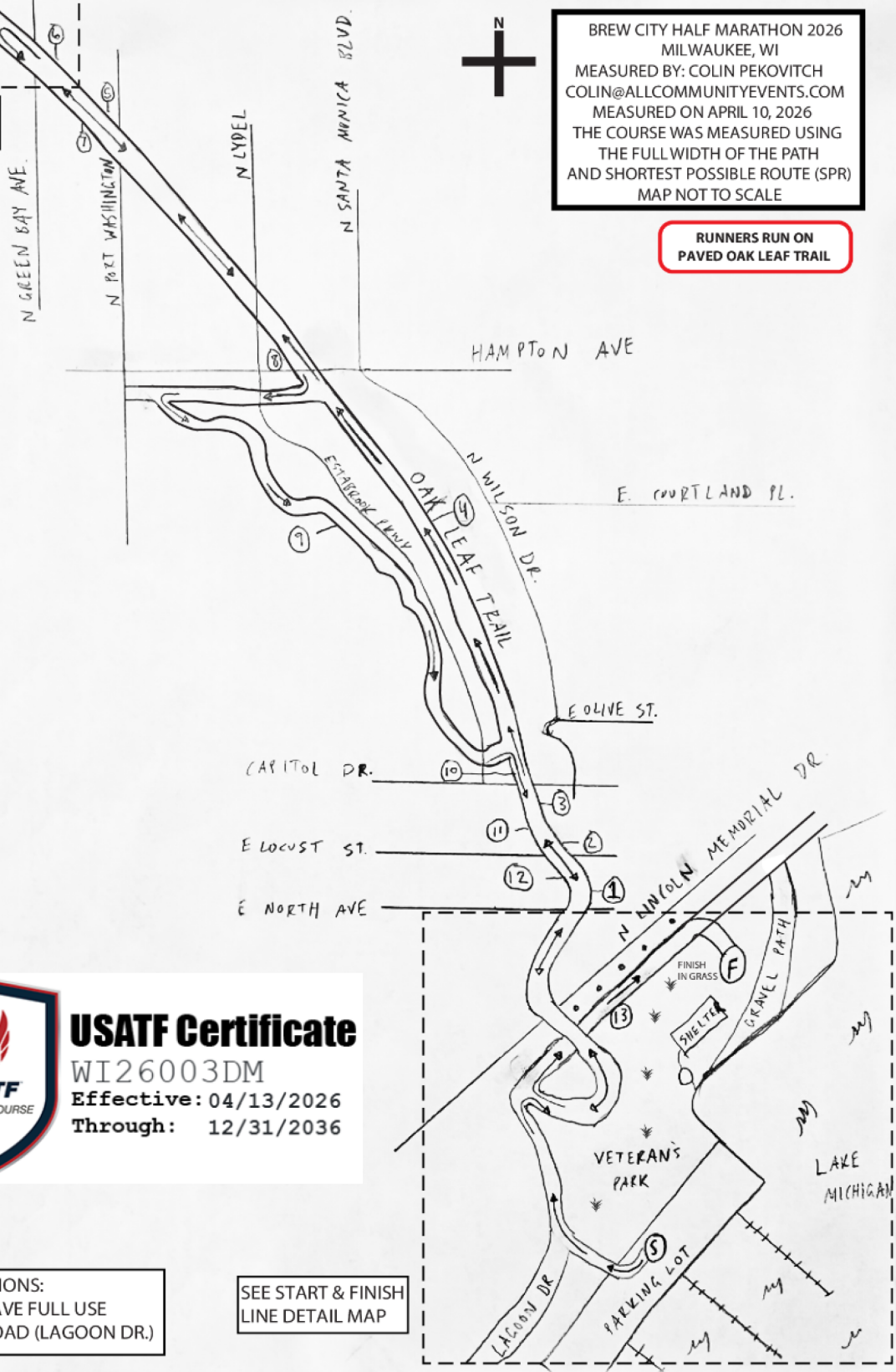
Date: April 30, 2026

David Moore - USATF/RRTC Certifier - 3112 E Edgemere Dr, Appleton WI 54915  
(920) 840-4582 - dave.moor@yahoo.com

TURN AROUND  
SEE NORTH U-TURN DETAIL MAP

BREW CITY HALF MARATHON 2026  
MILWAUKEE, WI  
MEASURED BY: COLIN PEKOVITCH  
COLIN@ALLCOMMUNITYEVENTS.COM  
MEASURED ON APRIL 10, 2026  
THE COURSE WAS MEASURED USING  
THE FULL WIDTH OF THE PATH  
AND SHORTEST POSSIBLE ROUTE (SPR)  
MAP NOT TO SCALE

RUNNERS RUN ON  
PAVED OAK LEAF TRAIL



**USATF Certificate**  
WI26003DM  
Effective: 04/13/2026  
Through: 12/31/2036

COURSE RESTRICTIONS:  
RUNNERS WILL HAVE FULL USE  
OF TRAILS AND ROAD (LAGOON DR.)

SEE START & FINISH  
LINE DETAIL MAP

### START & FINISH LINE DETAIL MAP

FINISH LINE IS 26 FT. 10 IN.  
EAST FROM THE 5TH LAMP POST  
EAST OF OAK LEAF PEDESTRIAN  
BRIDGE. THEN, PERPENDICULAR  
138 FT. 5 IN. SOUTHEAST INTO VETERAN'S  
PARK. IN LINE WITH THE MAN HOLE

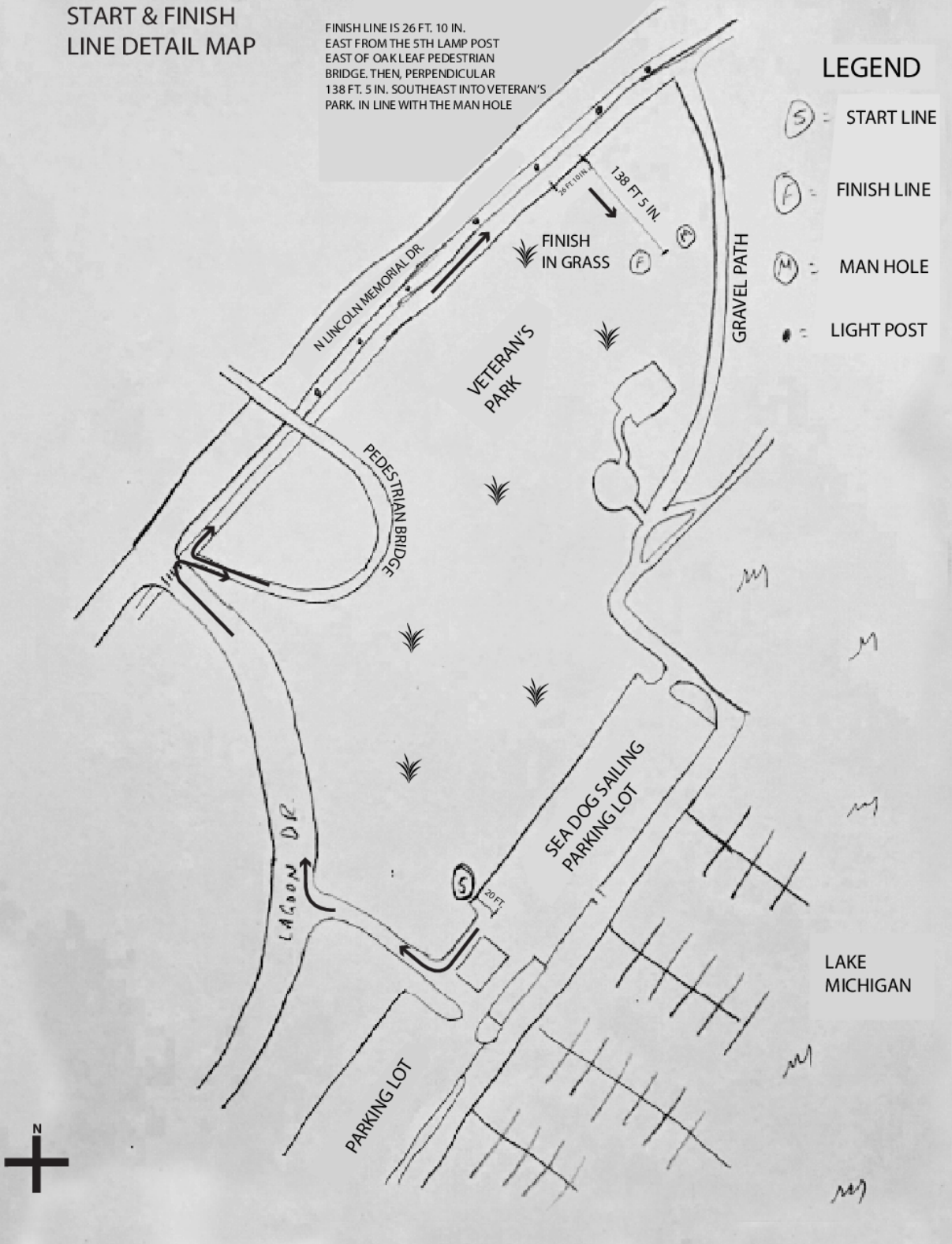
### LEGEND

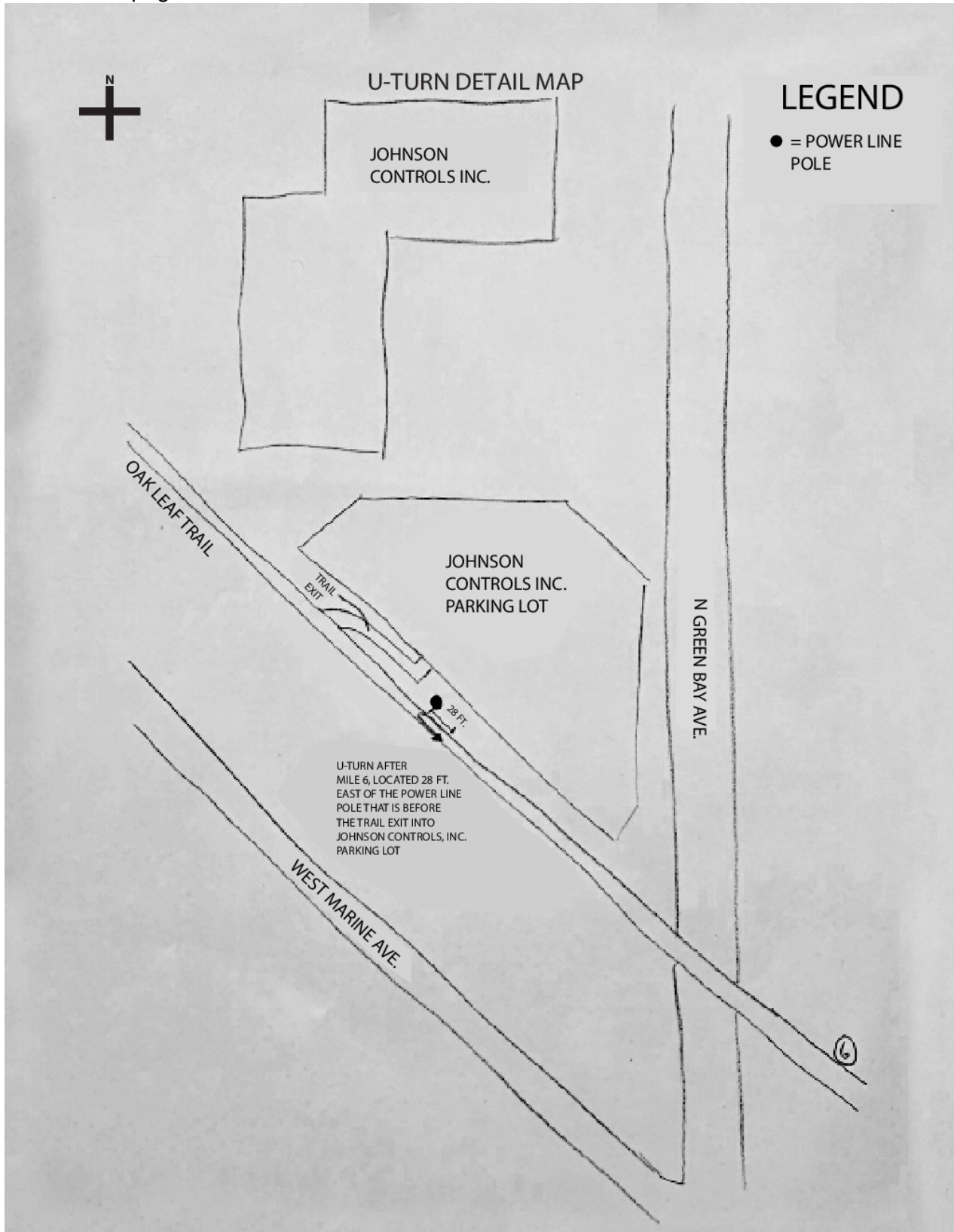
(S) = START LINE

(F) = FINISH LINE

(M) = MAN HOLE

• = LIGHT POST





**Start:** Located in Sea Dog Sailing parking lot, the most south-western parking spot line, 20ft from the northern curb.

**Mile 1:** 189 ft. N of E. North Ave Bridge on Oak Leaf Trail

**Mile 2:** West of 3104 N Cambridge Ave. Reference Longitudes & latitudes coordinates. On the trail, there is no permanent structure to reference.

**Mile 3:** 38 ft. N. of Trail information sign on Oak Leaf Trail

**Mile 4:** 52 ft. S of the first wooden plank on the wooden bridge located on Oak Leaf Trail

**Mile 5:** West of Svetlana Veller Agency Inc, American Family Insurance. Reference Longitudes & latitudes coordinates. On the trail, there is no permanent structure.

**Mile 6:** East of DaVita Bay Shore Dialysis. Reference Longitudes & latitudes coordinates. On the trail, there is no permanent structure nearby.

**U-Turn 1:** After Mile 6: located 28 ft. E of the power line pole before the trail exit into the Johnson Controls, Inc. parking lot.

**Mile 7:** 106 ft. N of the most western metal fence post before the bridge entrance.

**Mile 8:** 21ft. E of the 6<sup>th</sup> parking spot located in Parkside at Estabrook Apartments

**Mile 9:** 26 ft. E of the metal baseball backstop

**Mile 10:** 21 ft. S of metal grate on pedestrian bridge that crosses Capitol Dr

**Mile 11:** 39 ft. W of Water Pump Reservoir located on Cambridge Avenue

**Mile 12:** 52 ft. S of Trail entrance ramp on Oak Leaf Trail

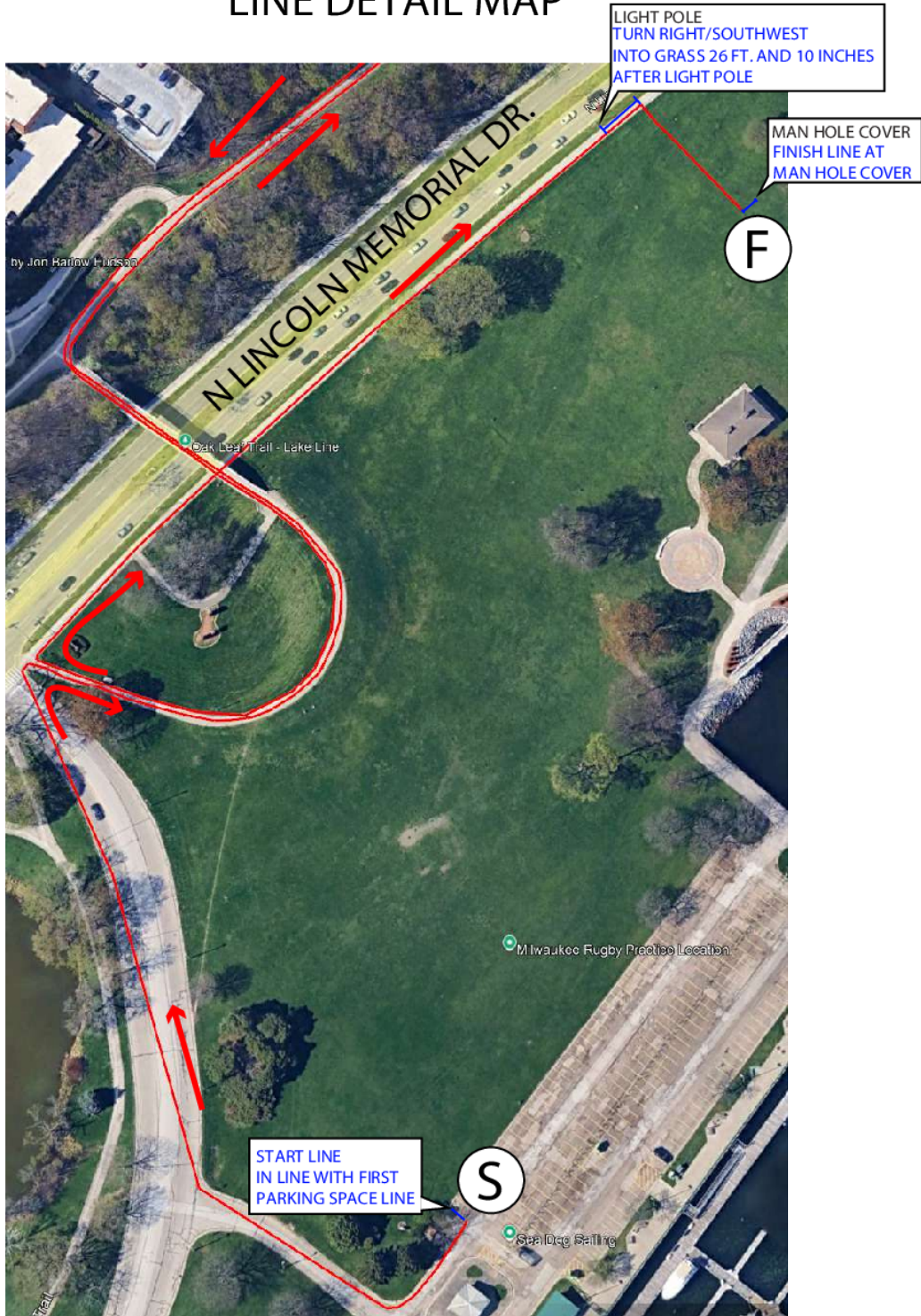
**Mile 13:** 70 ft. N of the 2<sup>nd</sup> light pole, North of the Oak Leaf pedestrian bridge

**Finish:** 26 ft. and 10 in. East from the 5<sup>th</sup>. lamp post east of the Oak Leaf pedestrian bridge. Then, perpendicular 138 ft. and 5 in. southeast into Veterans Park, in line with the manhole.

Mile	Latitude & Longitude
Start	43°02'58.9"N 87°53'18.3"W
1	43°03'38.4"N 87°53'20.8"W
2	43°04'29.4"N 87°53'30.3"W
3	43°05'18.5"N 87°53'42.0"W
4	43°06'03.8"N 87°54'16.9"W
5	43°06'39.0"N 87°55'09.3"W
6	43°07'14.3"N 87°56'02.1"W
U Turn 1	43°07'21.0"N 87°56'12.1"W
7	43°06'51.3"N 87°55'27.7"W
8	43°06'16.0"N 87°54'35.1"W
9	43°05'59.6"N 87°54'20.5"W
10	43°05'21.6"N 87°53'44.8"W
11	43°04'33.2"N 87°53'30.4"W
12	43°03'41.8"N 87°53'23.2"W
13	43°03'07.0"N 87°53'19.5"W
Finish Line	43°03'08.1"N 87°53'15.2"W



# START & FINISH LINE DETAIL MAP





# NORTH HALF MARATHON U-TURN



Mile	Latitude & Longitude
Start	43°02'58.9"N 87°53'18.3"W
1	43°03'38.4"N 87°53'20.8"W
2	43°04'29.4"N 87°53'30.3"W
3	43°05'18.5"N 87°53'42.0"W
4	43°06'03.8"N 87°54'16.9"W
5	43°06'39.0"N 87°55'09.3"W
6	43°07'14.3"N 87°56'02.1"W
U Turn 1	43°07'21.0"N 87°56'12.1"W
7	43°06'51.3"N 87°55'27.7"W
8	43°06'16.0"N 87°54'35.1"W
9	43°05'59.6"N 87°54'20.5"W
10	43°05'21.6"N 87°53'44.8"W
11	43°04'33.2"N 87°53'30.4"W
12	43°03'41.8"N 87°53'23.2"W
13	43°03'07.0"N 87°53'19.5"W
Finish Line	43°03'08.1"N 87°53'15.2"W